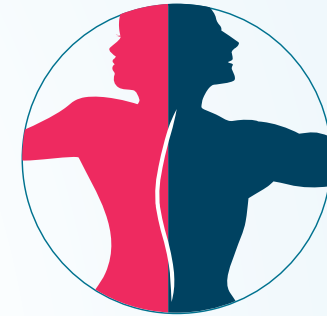


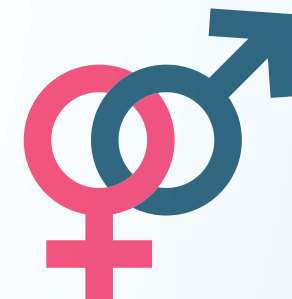
2019 Body Contouring After Massive Weight Loss

BODY CONTOURING AFTER MASSIVE WEIGHT LOSS PROCEDURES	2019	2018	% CHANGE 2019 vs. 2018
Breast lift (Mastopexy) after massive weight loss	13,903	15,360	9%
Lower body lift after massive weight loss	6,625	6,463	3%
Thigh lift after massive weight loss	4,148	4,034	3%
Tummy tuck (Abdominoplasty) after massive weight loss	21,188	23,206	-9%
Upper arm lift after massive weight loss	7,590	6,955	9%
TOTAL BODY CONTOURING AFTER MASSIVE WEIGHT LOSS PROCEDURES	53,454	56,018	-5%



2019 Gender Confirmation Surgery

GENDER CONFIRMATION SURGERIES	2019	2018	% CHANGE 2019 vs. 2018
Male to Female patients	3,359	2,885	16%
Female to Male patients	7,626	6,691	14%
TOTAL BODY CONTOURING AFTER MASSIVE WEIGHT LOSS PROCEDURES	10,985	9,576	15%



All values are projected.
ASPS procedural statistics represent procedures performed by ASPS Member Surgeons certified by The American Board of Plastic Surgery® as well as other physicians certified by American Board of Medical Specialties-recognized boards.
*ASPS, 2020